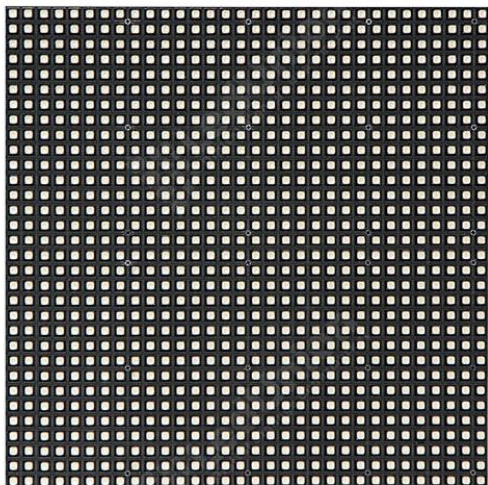




# UniModule EX6

- 6000nit brightness, 24/7 working in day and night
- 2.5~10mm pixel pitch for option
- Right angled, arc shaped module and cabinet available
- Front or rear serviceable for different buildings
- 5 years lifespan



## Technical Specifications

Pixel Pitch	6mm
Pixel Configuration	SMD2727
Pixel Density	27,777pix/sqm
Brightness	6000nit
LED Module Size WxHxD	192x192x17mm
LED Module Resolution	32x32
Driving Type	1/8
Weight	320g
Horizontal Viewing Angle	+/-70°
Vertical Viewing Angle	+/-70°
Viewing Distance	6-20m
Protection grade	IP62
Color Temperature	3000-9500K Adjustable
Grey Scale	14bit
Contrast Ratio	3000:1
Video Frame Rate	50/60Hz
Refresh Rate	1920Hz
Storage Temperature / Humidity	-30~+70°C, 10~95%RH
Operating Temperature / Humidity	-30~+60°C, 10~95%RH
Maintenance	Rear service
Input Voltage	100-240V AC
Input Signal	DVI/HDMI/VGA/SDI/DP/AV/S-Video
Brightness Control	Manual / Automatic
LED Lifetime	>100,000 Hours
Service	Design, Configuration, Installation, Local repair